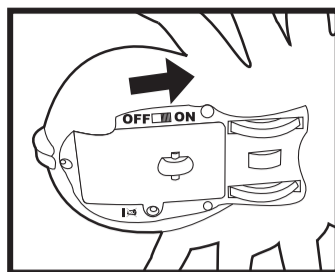


3. Assembly



Turn the base unit switch to ON.

Battery Information

PLEASE RETAIN THIS INFORMATION FOR FUTURE REFERENCE.

- Non-rechargeable batteries are not to be recharged;
- Rechargeable batteries are only to be charged under adult supervision;
- Rechargeable batteries are to be removed from the toy before being charged;
- Different types of batteries or new and used batteries are not to be mixed;
- Batteries are to be inserted with the correct polarity;
- Exhausted batteries are to be removed from the toy;
- The supply terminals are not to be short-circuited.

Always :

- Make sure battery compartments are secure.
- Use batteries of the correct size and type.
- Fit batteries correctly observing the plus and minus marks on the battery and compartment.
- Replace a whole set of batteries at one time.
- Remove dead batteries from equipment.
- Remove batteries from appliance that will not be used again for a long time.
- Please remember that small button cells and AAA batteries should be kept away from young children as they could be easily swallowed. Seek medical advice if you believe a cell has been swallowed.

Never :

- Mix different types of batteries.
- Mix old and new batteries.
- Dispose of batteries in a fire.
- Attempt to recharge ordinary batteries.

Consumers have a significant role to play in reducing the impact of waste electrical and electronic equipment on the environment, you can help by re-using or recycling such equipment.

The crossed out wheellie-bin symbol indicates that the product & batteries must not be disposed of in domestic waste as they contain substances which can be damaging to the environment and human health. If you cannot re-use or recycle the product or batteries, please use designated collection points, or civic recycling facilities to dispose of them.

Spare parts are available by emailing tkc@wowstuff.co.uk

The device complies with Part 15 of the FCC rules.

Operation is subject to the following conditions:

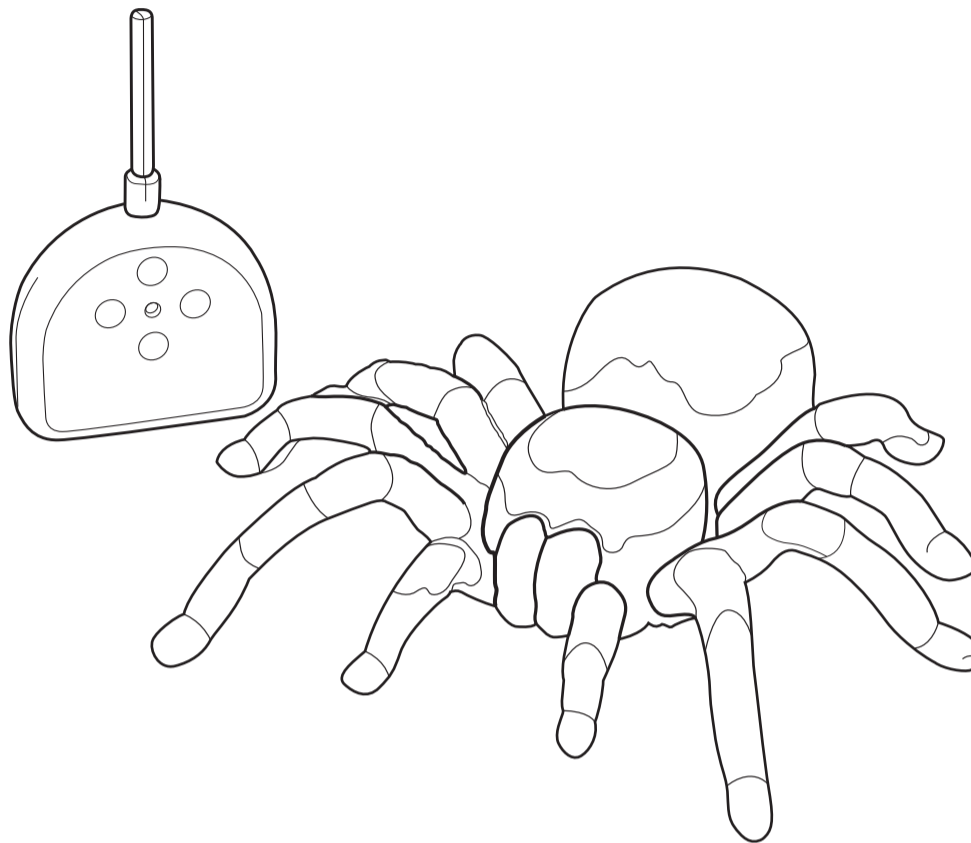
- (1) this device may not cause interference, and
- (2) this device must accept any interference received, including interference that may cause undesired operation.

FCC ID: Q6N149EL



P38-EL150-81041001

Radio-controlled tarantula instructions



About the Natural History Museum

The Natural History Museum is home to around 70 million specimens, and looks after one of the world's most important collections of natural history. It is an irreplaceable record of the planet's astonishing diversity. Every year, more than three million people visit the Museum, making it a vibrant, fun, buzzing place in which to discover the natural world.

It began as the natural history department of the British Museum in the 1700s, but soon outgrew the buildings in Bloomsbury. In 1881, the present building in South Kensington was opened, a world-famous construction designed by Alfred Waterhouse using groundbreaking materials and techniques.

Inside, the wonders continue. From the fossil-filled *Dinosaurs* gallery to the living exhibition of the *Wildlife Garden*, the Museum explains and investigates all aspects of the natural world. Massive natural forces shape the world in *Earth's Treasury* and *The Power Within*. Living things interact in the *Ecology* gallery and in the hands-on *Investigate Centre* visitors can touch, weigh and examine thousands of real specimens. The Darwin Centre shows some of the Museum's 70 million specimens, and the libraries hold the largest collection of natural history books in the world, including more than one million printed books and 500,000 original drawings, paintings and prints.

But far from being a dusty building full of dead things, the Museum is a vibrant scientific organisation, the largest in the UK. About 300 scientific staff work here furthering our knowledge of the natural world, tackling global issues such as threats to wildlife and the causes of disease.

For more information, please visit www.nhm.ac.uk

If you would like to further support the work of the Museum why not become a Member? Tel 020 7942 5792 or email members@nhm.ac.uk

Sales of this product support the Natural History Museum.

Radio-controlled Tarantula

How it works

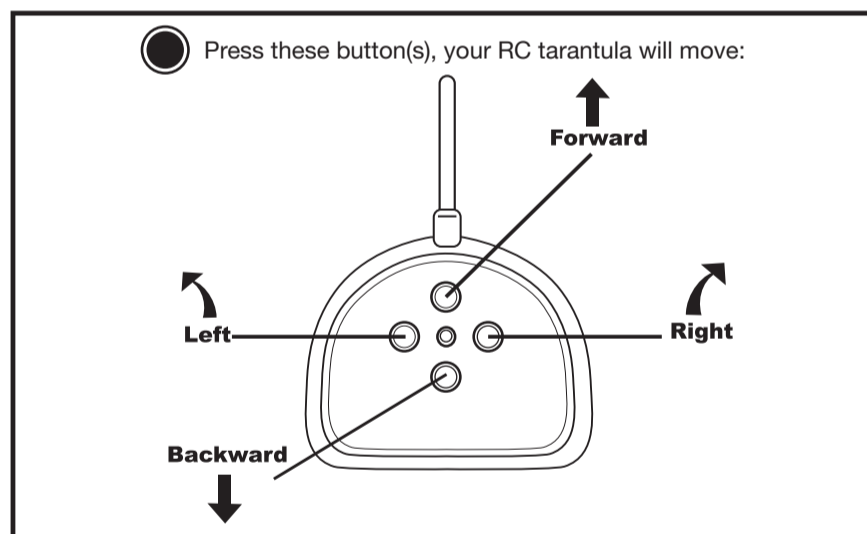
Insert batteries into the tarantula and its handset.

The tarantula is controlled by the simple-to-use radio control handset. With a range of up to nine metres, the tarantula can be controlled at a distance to frighten your family and friends.

Switch the button under the tarantula from off to on, and return to off when not used for more than 10 minutes.

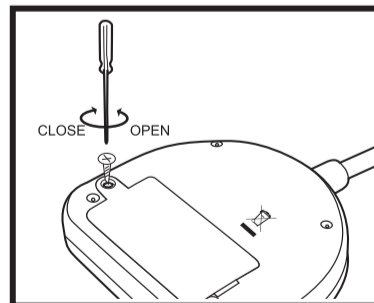
Press the arrow keys on the handset (shown on the diagram on page 3) to move the tarantula forwards, backwards, right or left. By continually pressing either the left or right button the tarantula will spin to the left or right in a tight circle.

The tarantula's eight legs move independently, producing a very life like effect. The tarantula is covered in realistic coarse hair that feels rough to the touch. From time to time, some hair may fall out, just like in a real tarantula.

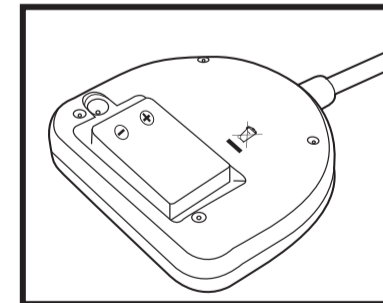


Battery Installation

1. Remote controller

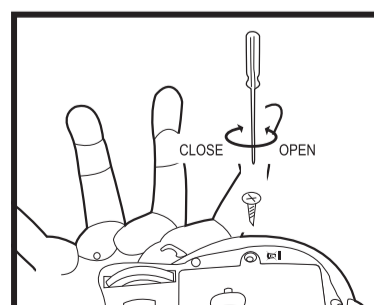


1) Open or close the cover with a Phillips screwdriver.

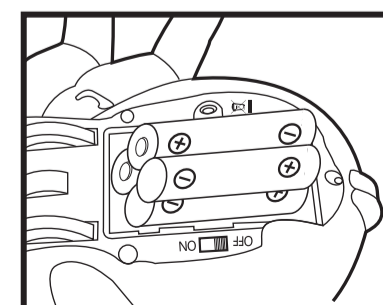


2) Insert one 9V (6LR61) battery.

2. Tarantula



1) Open or close the cover with a Phillips screwdriver.



2) Insert 4 size AA (LR6) 1.5V batteries.