

### Important advice

- Not suitable for children under 14 years old.
- Adult supervision is required.
- Not suitable for children under 3 years due to small parts which may represent a choking hazard.
- Please ensure the surface of the Jellyfish lamp-quarium is dry before connecting the AC adapter.
- The Jellyfish lamp-quarium should be unplugged from the AC adapter before emptying water.
- Care should be taken to prevent water spilling from the Jellyfish lamp-quarium during use.
- Ensure that the Jellyfish lamp-quarium is dried before storage to minimise any possible microbial contamination.
- As with all electrical products precautions must be observed during handling and use to prevent electric shock. The AC adapter must be regularly examined for damage to the cord, plug, enclosure & other parts. In the event of any damage being found the AC adapter should not be used until it has been professionally repaired.
- The Jellyfish lamp-quarium must only be connected to the power supply included with the product.
- Do not use any other power source, or use multiple power sources.
- Only the AC adaptor provided with this Jellyfish lamp-quarium should be used for correct assembly.
- The AC adapter (transformer) is not a toy.
- Avoid looking directly at the LED lights, as this may cause injury.
- Please retain this packaging for future information.

Consumers have a significant role to play in reducing the impact of waste electrical and electronic equipment on the environment, you can help by re-using or recycling such equipment.

The crossed out wheellie-bin symbol indicates that the product must not be disposed of in domestic waste as they contain substances which can be damaging to the environment and human health. If you cannot re-use or recycle the product, please use designated collection points, or civic recycling facilities to dispose of them.

Spare parts are available by emailing [tkc@wowstuff.co.uk](mailto:tkc@wowstuff.co.uk)

### Warning:

This appliance is not intended for use by persons (including children) with reduced physical, sensory or mental capabilities, or lack of experience or knowledge, unless they have been given supervision or instruction concerning use of the appliance by a person responsible for their safety.

### Assembly

The Jellyfish lamp-quarium is intended to be assembled by an adult.  
It is not to be connected to a power supply of more than: DC4.5V  $\approx$  500mA



Distributed by: China Industries Ltd. T/A Wow! Stuff,  
Creative Industries Centre, Wolverhampton Science Park,  
Wolverhampton, WV10 9TG. [www.wowstuff.co.uk](http://www.wowstuff.co.uk)



## Jellyfish lamp-quarium instructions



### About the Natural History Museum

The Natural History Museum is home to around 70 million specimens, and looks after one of the world's most important collections of natural history. It is an irreplaceable record of the planet's astonishing diversity. Every year, more than three million people visit the Museum, making it a vibrant, fun, buzzing place in which to discover the natural world.

It began as the natural history department of the British Museum in the 1700s, but soon outgrew the buildings in Bloomsbury. In 1881, the present building in South Kensington was opened, a world-famous construction designed by Alfred Waterhouse using groundbreaking materials and techniques.

Inside, the wonders continue. From the fossil-filled *Dinosaurs* gallery to the living exhibition of the *Wildlife Garden*, the Museum explains and investigates all aspects of the natural world. Massive natural forces shape the world in *Earth's Treasury* and *The Power Within*. Living things interact in the *Ecology* gallery and in the hands-on *Investigate Centre* visitors can touch, weigh and examine thousands of real specimens. The Darwin Centre shows some of the Museum's 70 million specimens, and the libraries hold the largest collection of natural history books in the world, including more than one million printed books and 500,000 original drawings, paintings and prints.

But far from being a dusty building full of dead things, the Museum is a vibrant scientific organisation, the largest in the UK. About 300 scientific staff work here furthering our knowledge of the natural world, tackling global issues such as threats to wildlife and the causes of disease.

For more information, please visit [www.nhm.ac.uk](http://www.nhm.ac.uk)  
If you would like to further support the work of the Museum why not become a Member?  
Tel 020 7942 5792 or email [members@nhm.ac.uk](mailto:members@nhm.ac.uk)

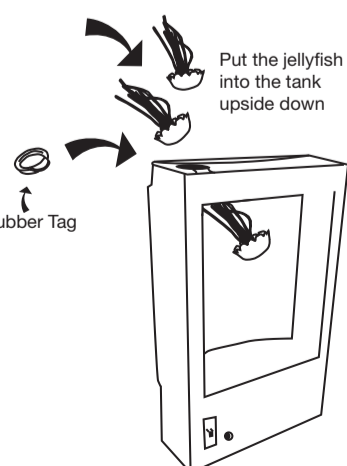
Sales of this product support the Natural History Museum.

### Getting started

The lamp-quarium comes with three silicon jellyfish and a mains power adapter. First lift the rubber tab on top of the unit and fill the tank completely with water. It is very important to fill water to the very top of the tank, so the water pumps can circulate water fully and the jellyfish can move in a realistic way.

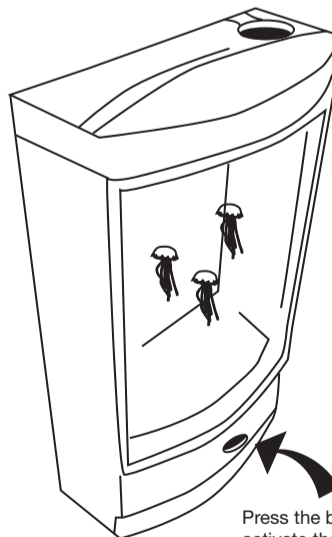
Add two to three drops of liquid detergent to the tank. This will reduce the amount of air bubbles in the tank and give better jellyfish movement.

Add the jellyfish by gently pushing them down into the tank with a long blunt instrument, such as the reverse end of a pencil. Push firmly down into the tank with the jellyfish upside down as shown in the diagram to release air bubbles that may be trapped within the jellyfish. Replace the rubber tab on the top of the unit.



### Connecting the lamp-quarium

1. Connect end A to the back of product and end B of the adapter into the wall socket (as shown on diagram). Turn the switch on the back of the unit to ON.
2. Turn on the switch.



3. Press the button on the front of the unit to activate tank pump and lights. Jellyfish will now begin to move about the tank, and the lighting will change continuously through a sequence of colours. Press the front button at any time to stop pump and lights. Please note, it may take some time for all the jellyfish to move around the tank. Occasionally jellyfish get trapped in the corners of the tank. When this happens, use a long blunt instrument and push the jellyfish down and towards the middle of the tank. If air bubbles can be seen inside the jellyfish ensure when pushing down into the tank that it is upside down. This should allow bubbles to escape. If the problem persists, add a few more drops of liquid detergent to the tank.

### Maintaining the lamp-quarium

- Always place the lamp-quarium on a flat dry surface and handle with care.
- Always ensure it is positioned the correct way up.
- Exchange water when dirty, and at least once a week.
- Unit switches off automatically after four hours. To prevent overheating and to maximise life of the unit, leave for one hour before re-activating the unit.